

Heirloom Clocks: The Wonder Clocks

I **Wonder** what to do with these? I **Wonder** why Carl kept them? I **Wonder** who could use them? I **Wonder** if they are worth keeping? I **Wonder** if they are really just trash? They need so much work!

First I show the 27 Mechanical **Wonders**, followed by the 19 Electric **Wonders**.

I **Wonder** if you will find just what you have been looking for? I hope so.

To order any item follow the link below to an online order form. You will be contacted by email or phone within 24 hours after your order is received. Items are one-of-a-kind and you will be notified if the item you are interested in is still available.

[Heirloom Clocks Estate order form](#)

Ansonia "Precisia"

Precisia #3 c.1923 has an Ansonia movement, mahogany case, a metal identification tag inside the back door, a 5" dial with bezel and hinged door, but missing the convex glass. Also the wood above the numeral 10 is gouged out a bit. It is 8 ¾" high x 17 ¾" wide, #1651 on page 421 of Ansonia by Tran Duy Ly. Shelf D2. For parts or repair Carl's price is \$100.00. Order #AN-B06-HW



Buco "Bauman"

Bauman A G 9444 Diepoldsau Sg/Schweiz. In its own original box. This is a Swiss product, completely original. The dial, balance, crown and cog wheels are fashioned entirely of wood. Weights and original instructions are included, but the two little blocks that are in the picture on the top of the box are not in the box. For a creative project or for parts, Carl's price is \$60.00. Order **#BU-B01-HW**



Borel

This Ernest Borel clock in pieces is from the 1920s. The clock is 2 7/8" wide and 4 1/8" high. The octagon shaped heavy brass frame will surround the 2" wide dial. This clock has a 17 Jewel movement. Carl's #2006125. Box 4. For parts or reconstruction, Carl's price is \$100.00. Order **#BR-B02-HW**



Cuckoo Mfg Co.

This Tambour c.1950 has 2 jewels and was made in Germany. It is 16" wide, 7 3/4" high and 5" deep, and missing one hand, the glass and bezel. It has a back door and a movement marked "Cuckoo Mfg. Co" D1. For parts Carl's price is \$60.00. Order #CU-B01-HW



Endura

This 8-day alarm was serviced 9/6/2021. Carl noted "It works". It is missing its bottom frame and stand. Box 4. For parts or repair Carl's price is \$20.00. Order #EN-B01-HW



Gilbert

Wooden Case in pieces, 19" high x 12" wide. Dial identifies it as a Gilbert. Shelf E2. For parts or repair Carl's price is \$60.00. Order #GB-B02-HW



Gilbert "Tunis"

This Gilbert has parts and pieces of the "Tunis", Crystal Regulator. It has the visible escapement porcelain dial, but no glass. It does have a real mercury pendulum. The movement imprint says: Gilbert Co Winsted USA 1481. The Tunis clock is pictured on page 118, #296 in the Gilbert book by Tran Duy Ly. Box 61. For parts or repair, Carl's price is \$100.00. Order #GB-B03-HW



Gilbert "Tunis" beveled glass

The beveled glass pieces were in a separate box. I do not know if they fit this clock. There are four pieces $4 \frac{7}{8}$ " x $6 \frac{3}{8}$ ", bottom left one piece $7 \frac{1}{2}$ " x ? and the bottom right has no glass. Box 91. \$20.00. Order #AS-B85-GG



Ingraham

CASE, enameled wood, metal feet, E. Ingraham movement, height 11 ¼, width 10 ½” for the case, 12” with the metal feet. Pat Nov 11, '79. Shelf D2. For parts or repair or restoration \$40.00. Order #IN-B10-HW



movement:
E. Ingraham
Pat Oct 8. 78
Nov 11. 79
Bristol, Conn
wood case
metal feet



movement:
E. Ingraham
Pat Oct 8. 78
Nov 11. 79
Bristol, Conn
wood case
metal feet

Lenzkirch

The CASE has a movement, a pendulum and one weight. It has glass side panels and is 38" long, and 13" wide. Online all of the Lenzkirch clocks I saw were extremely ornate, so this one is probably missing decorative pieces. For parts or repair, Carl's price is \$200.00. Order #LZ-B01-HW



Lux "Swinging Bluebird"

The Lux Swinging Bluebird has a wood flour and resin case that is about 4" x 6". When it is running the blue bird rocks back and forth as if tending her as yet unhatched babies. This clock is pictured on page 56 in *The Wonderful World of Pendulettes* by Wayne and Ruth Herrmann. Box 68. For parts, Carl's price is \$10.00. Order #LU-B08-HW



Lux "Dove"

These pieces are from the Lux Dove, a 30 hour animated Pendulette novelty clock, made of pressed wood. The colors have faded, but it was a mahogany red dove with green leaves, width 3 1/2", length 7". Box 68. Carl's price is \$10.00. Order #LU-B09-HW



Schatz

This Anniversary clock c.1950 is in pieces. It is 8" high. The brass is very tarnished. This clock has the dial and hands, but is missing the rotating pendulum. Shelf B2. For parts or repair \$40.00. Order #SC-B02-HW



Sessions

This clock has a "Sessions" imprinted on the movement and "Sessions" written on the 5" dial and was sitting in a box with the wooden case and other parts pictured here. The case is 10 1/2' high and 8 1/4" wide. It is 5" deep. Box 46. For parts or reconstruction, Carl's price is \$20.00. Order #SE-B05-HW



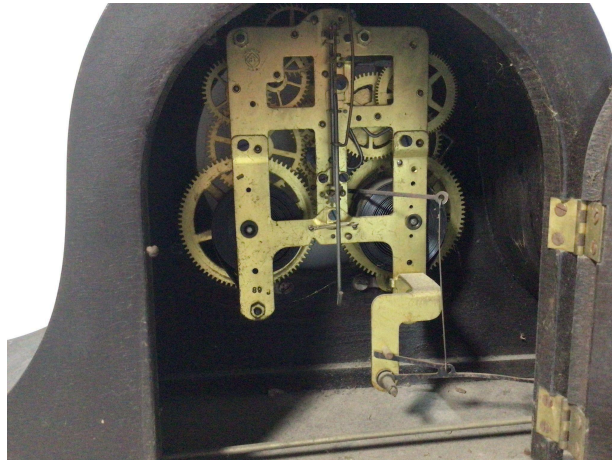
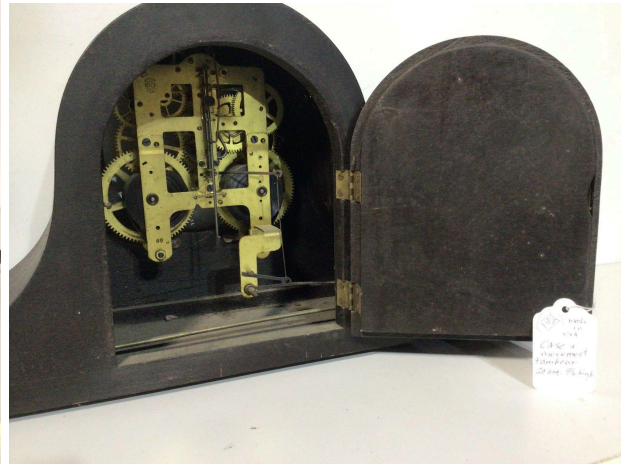
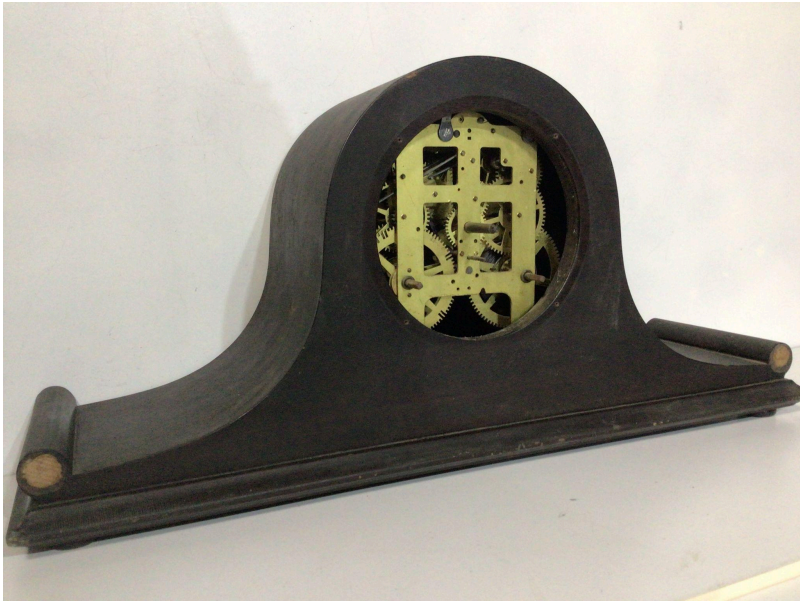
Seth Thomas

This Column style CASE has a label that identifies it as "invented by Eli Terry", made by "Seth Thomas", and sold at Plymouth, Conn. It is 34" by 18". It has a movement, pendulum, key, winder, and a wooden escapement gear. The clear glass window in the door is 10" x 10". The lower window is filled in with a patterned glass. Shelf W. Carl's price for parts or repair is \$100.00. Order #ST-B05-HW



Seth Thomas

This dark wood tambour is 20" long and 9 1/2" high. The movement has the trademark Seth Thomas initials inside the diamond. Shelf E4. For parts of reconstruction, Carl's price is \$100.00. Order #ST-B08-HW



Seth Thomas Model 103-1

Model 103-1 has a solid mahogany clock case, which is 4 1/4" high, 4" wide and 2 1/2" deep. The porcelain dial is 2 3/8" under beveled glass. The dial reads "Seth Thomas 8-day". The right and left side edges are inlaid with a lighter material. The case needs to be repaired. There is no back cover. Box 30. For repair or parts, Carl's price is \$100.00. Order #ST-B010-HW



Welch "Eclipse Regulator"

This Welch Eclipse Regulator is ready for restoration. It has the Welch walnut case, Welch movement, printed glass, door, hinges, screws, hook and eye, and a label on the back which reads ECLIPSE E N WELCH MANUFACTURING CO FORESTVILLE. Carl purchased a new ivory calendar dial from the Old Timers. This clock is pictured on page 84, numbered 117 in the Tran Duy Ly book on Welch Clocks, 39" high, 15" wide, 7" dial. The movement is on page 84, #116. W2. For parts or restoration, Carl's price is \$300. Order #WE-B02-HW



Waterbury "Java"

Clock pieces from the Waterbury Java. The ornate bezel measures 4 1/2" surrounding the 3 5/8" porcelain dial. It has a visible escapement and a faux mercury pendulum. Box 49. Carl's price is \$100.00. Order #WT-B02-HW



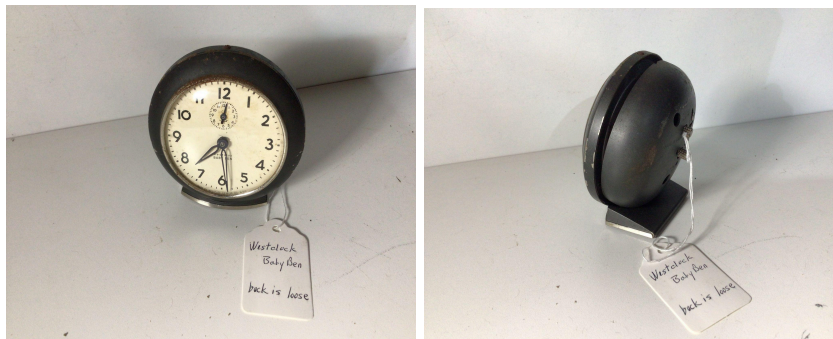
Westclox

This Model Baby Ben is for parts only. It is 3 5/8" high. Carl's note says the clock wheel on the Time side is too worn to permit winding securely. Box 15. Carl's price is \$10.00. Order #WX-B03-HW



Westclox

This Model Baby Ben is for parts or repair. It is 3 5/8" high. The back is loose as you can see in the photo below. Box 15. Carl's price is \$10.00. Order #WX-B04-HW



Westclox

This Baby Ben alarm is I missing one leg. The bezel and dial are 2 3/4" in diameter. Box 15. For parts or repair Carl's price is \$10.00. Order #WX-B05-HW



Unknown Maker

This heavy black slate clock has no identifying markers that I could find. It is 9 ½" high and 12" long, with a 3 ½" dial. The scene depicted at the top is of a primitive battle. Four columns are obviously missing from the front. It has a decorative back plate and movement inside. B1. For parts or restoration, Carl's price is \$100.00. Order #UM-B03-HW



Unknown Maker

This solid block mahogany clock has an enamel dial, but is missing its hands and winder. It is 4 1/4" wide, 4 3/8" high and 2" deep. Box 4. For parts or repair, Carl's price is \$20.00. Order #UM-B08-HW



SOLD

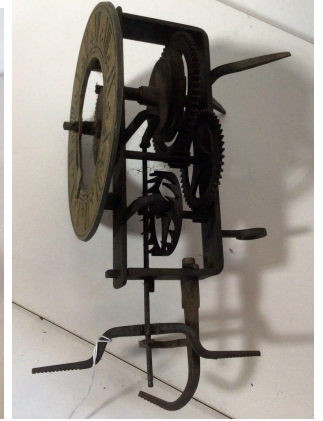
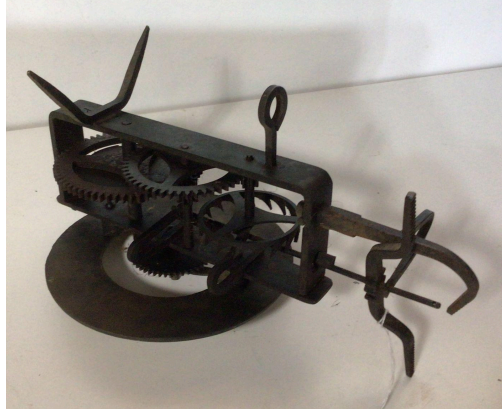
Unknown Maker

This antique electric clock is 21" square. It is a very heavy wooden clock, with movement inside. On the movement are the numbers 147791 and PAT OCT 4, 1898. The dial measures 14 1/2". Closet 3. Carl's price for parts or repair is \$200.00. Order #UM-B13-HW



SOLD

Unknown Maker This unidentified iron clock is 9 ½' high with a 5 ½' dial. Box 49. For curiosity, for parts or repair, Carl's price is \$40.00. Order #UM-B16-HW



Unknown Maker

This walnut regulator case is 25" high and 10 ½" wide. Shelf E, top. For parts or restoration, Carl's price is \$75.00. Order #UM-B22-CW



Unknown Maker

This case is so broken. It is 19" high and 15" wide at the very bottom. The center measures 7 $\frac{3}{8}$ ". I should probably put it in the trash, but I hate to do that since it has survived for a century or so. It does have a fancy base and a few metal gears. Order # **UM-B60-HW** \$10.00.



The Electric Wonders:

General Electric

Model 7F5, marked with patent years 1922-1927 is a Bakelite brown, round top clock. It has hands, but no glass. It needs new wiring and plug, and has a crack on top. Box 44. For parts, Carl's price is \$10.00. Order #**GE-B21-EW**



General Electric

Model 8H58 is another Select-O-Switch, but this one has its original cord and plug, which a vintage clock collector might be interested in. It works, but has a "hum" when it is running. Box 44. For parts or repair, Carl's price is \$10.00. Order #GE-B25-EW



General Electric

Revere R-913, Westminster chime, has no gears, bezel, glass or hands, but has a chime motor and some parts inside. Box 44. For parts, Carl's price is \$40.00. Order #GE-B26-EW



Hammond

Model Chronmaster is a heavily polished mahogany, with a brass finial and brass feet. It is 9 1/2" high. The cord is chopped off. Box 75. For parts or repair, Carl's price is \$50.00. Order #HM-B08-ER



SOLD

Hammond

No Model Number. It is 4" wide and 4 1/2" high. The Bakelite case has a chip on the right side near the back. It does not run. Box 75. For **parts**, Carl's price is \$10.00. Order #HM-B13-EW



SOLD

Ingraham Model SSD2

Model SSD2 is a 6" x 8" electric clock with an oval dial with polished gold sash. This clock is #331 on page 127 of the Ingram book by Tran Duy Ly. Carl's note explains that the clock does not work and has a faulty motor that needs repair. Box 13. For repair or parts, Carl's price is \$20.00. Order #IN-B34-EW



Ingraham Model SSD2

Model SSD2 in pieces. The case is 6" x 8". The movement has an oval dial, polished gold sash. This clock is #331 on page 127 of the Ingram book by Tran Duy Ly. The picture on the bottom left is how it looks if I push all the parts together. Box 13. For repair or parts, Carl's price is \$20.00. Order #IN-B36-EW



SOLD

Ingraham Model SSD8

Model SSD8 in pieces. The wooden case is 5 ½" high and 8" long. It has the dial, hands, glass, backplate and cord. Box 34. For parts or repair, Carl's price is \$20.00. Order #IN-B37-EW



SOLD

Ingraham Model SSC5

Model SSC5 is in pieces. The walnut case is 9 ¼" high and 6" wide. It has a silk lined radio grille on the front of the case. Some parts are still attached to the gold and silver dial and bezel. The back plate is detached. This clock is shown as #314, on page 127 in Ly's Ingraham book. Box 33. For repair or parts, Carl's price is \$40.00. Order #IN-B38-EW



SOLD

Ingraham Model SA5

Model SA5 c.1939. This alarm is 6" high and 5 1/4" wide. The clock has a gold toned bezel, black feet and three gold stripes going up and over the top. The walnut case is warped. Box 34. For parts, Carl's price is \$10.00. Order #IN-B38-EW



SOLD

Landis

This large patented square wall clock is 17" square and 2 1/2" deep. The veneer is loose and falling off. It has a dial with Roman numerals, black hands and flat glass. The wire is cut. Location: Closet 1. For parts, Carl's price is \$20.00. Order #IN-B38-EW



New Haven "Amiens"

Elm City "Amiens" c.1929, height 12", width 10", silvered dial 6" with raised numerals, beveled convex crystal, solid mahogany, with two toned panels. It had a finial at the top of each column on the front, a large sweep second hand, front starting lever and sealed synchronous motor. This information is from Tran Duy Ly's book on New Haven Clocks, page 111. This clock is #419. Box 50. For parts Carl's price is \$40.00. Order **#NH-B06-HW**



Sangamo

Model unknown. The clock part is 10 ¼" high. It has a 5 ¾" dial. It is in pieces, but has beveled glass. Box 31. For parts or repair, Carl's price is \$60.00. Order **#SA-B02-EW**



SOLD

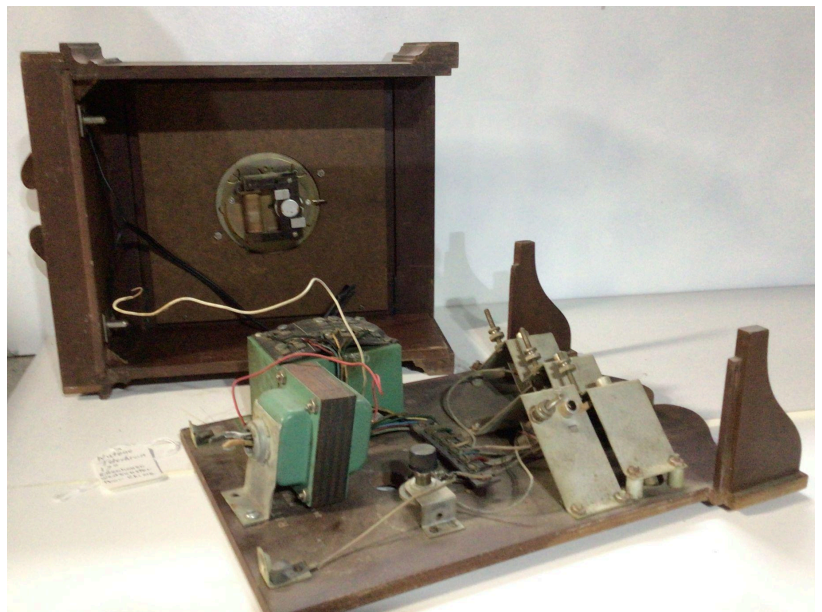
Sessions

This Sessions clock might be the top piece of a larger clock ornament. It is 7" high. The 3 1/2" dial identifies it as having a Sessions movement. The base is oval, 4 1/4" by 3 1/2". It is made of a light weight metal. Box 46. Carl's price is \$25.00. Order #SE-B06-ER



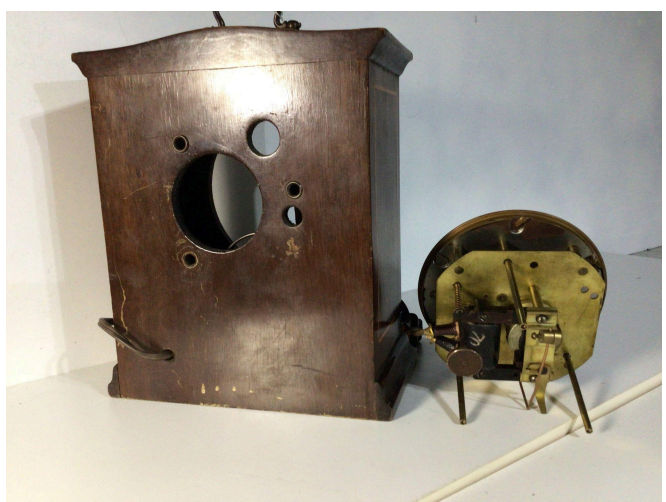
Telechron "Nutone"

Model Nutone Wall Clock, doorbell activated chime. Box 77. For parts or repair, Carl's price is \$40.00. Order #TE-B22-EW



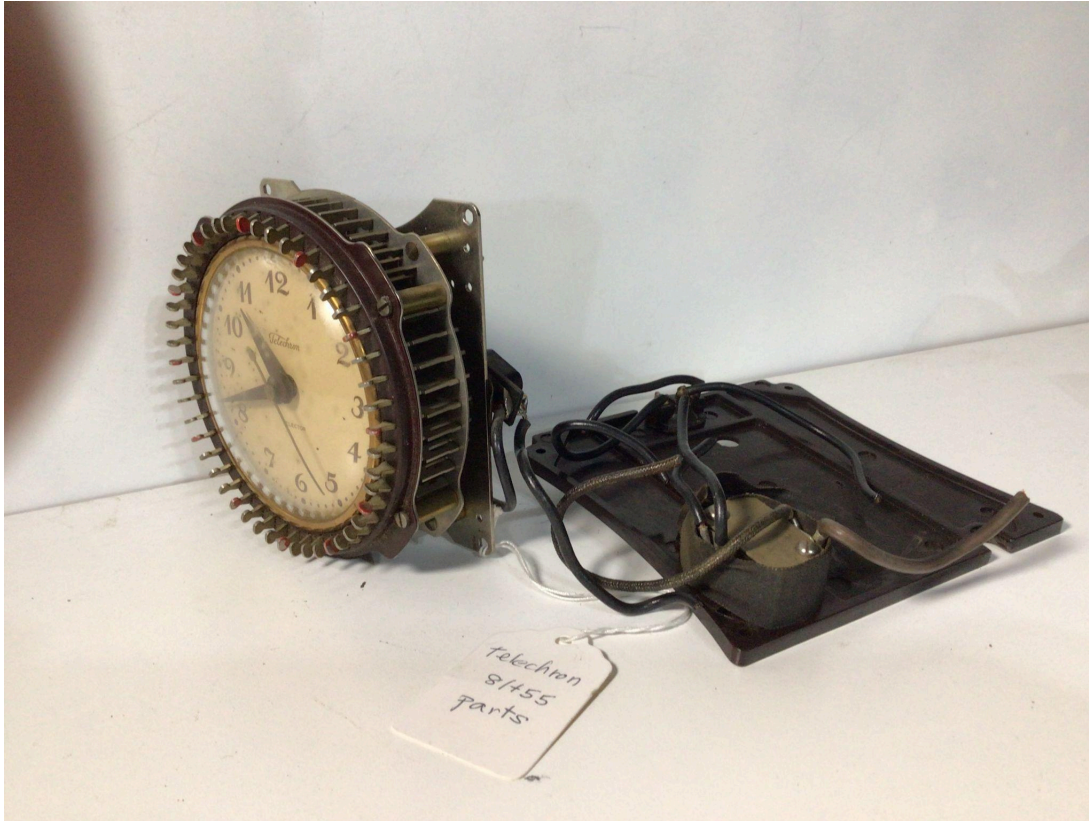
Telechron

Model unknown, darker wooden case with inlay of lighter wood. It is 9" high, 7 3/4" wide, 4" deep. The 4 1/2" dial, glass, and bezel is separated from the case, which has a top handle. Box 24. For parts or repair, Carl's price is \$100.00. Order #TE-B21-EW



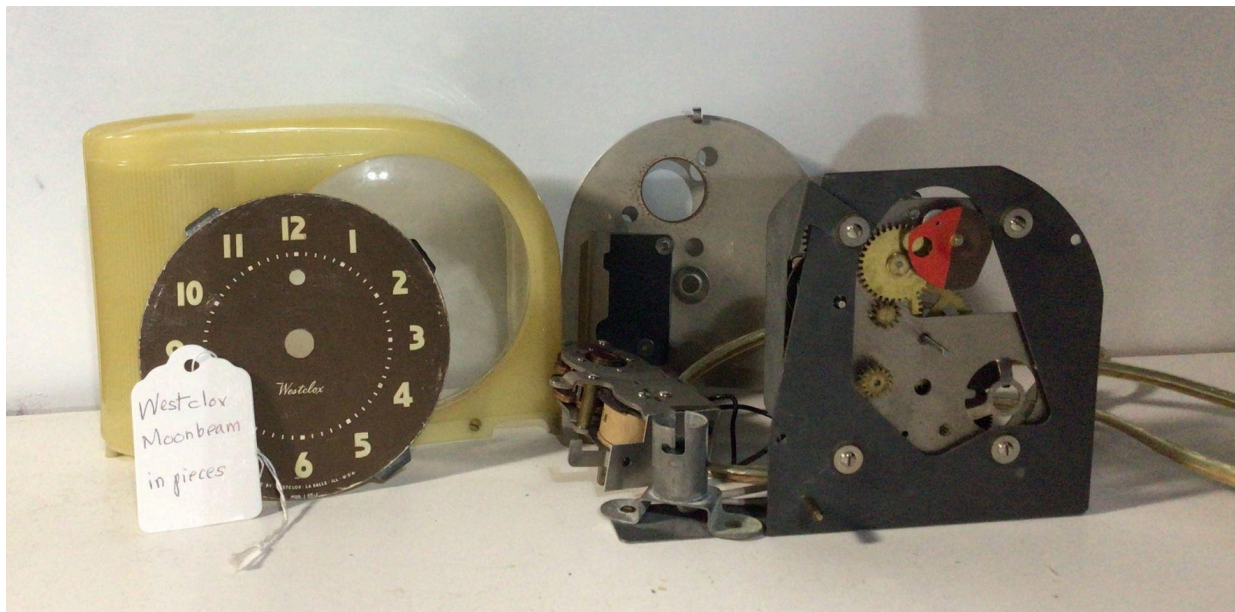
Telechron "Selector"

Model 8H55 "Selector" in pieces. It had a brown plastic case measuring 5 1/8" x 5 3/4" x 3 5/8". This clock had an outlet on the back for use in timing small appliances. . Box 9. \$10.00. Order #TE-B23-EW



Westclox "Moonbeam"

Model 904 Moonbeam parts. c. 1947-1957. The case is made of a plastic trademarked "Catalina". It wakes the person with a 25 watt flashing light after a four minute alarm. It is 4 3/4" high and 6 1/2" wide. This clock is described on page 90 of *Westclox, An Identification and Price Guide* by Gary Biochini. Box 15. For parts, Carl's price is \$20.00. Order #WX-B08-EW



SOLD

Westclox "Moonbeam"

Model 904 Moonbeam in pieces. c. 1947-1957. The case is made of a plastic trademarked "Catalina". It wakes the person with a 25 watt flashing light after a four minute alarm. This clock is described on page 90 of *Westclox, An Identification and Price Guide* by Gary Biochini. It is 4 3/4" high and 6 1/2" wide. The original color was darker yellow, but the vintage Moonbeams are various shades of yellow depending upon how they were stored. Box 15. For parts or repair, Carl's price is \$40.00. Order #WX-B07-EW

